



# The Actassi system

Catalogue 2018

Seamless end-to-end network connectivity

Life Is On

**Schneider**  
Electric

# Actassi puts all the differences aside!



The best features of our local brands and ranges are now merged into one, complete global system – Actassi.

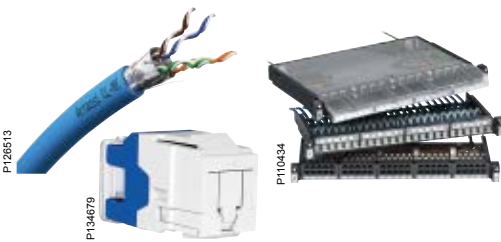
# Contents



The Actassi system

5

1



Actassi Copper solution

19

2

Index

41

3

Note

42

4



# A short Actassi summary

Here is a short summary for you: Actassi is Schneider Electric's new global state-of-the-art range for networking and connectivity infrastructure solutions, created for buildings and data centres. It consists of the best performing features from local Schneider Electric brands such as LexCom, Infraplus, Clipsal Datacomms, Sarel and Himel. To be able to offer every installer around the world, the best-of-the-best solutions, we have created ONE single system; Actassi.



Searching for a smaller sized home solution? LexCom Home should be your choice. You'll get data, TV and telephone in all rooms, and even access to all medias at the same time from the same outlet.

All products are designed to give superior usability and performance. They exceed the most advanced international standards, such as ISO/IEC 11801: 2011 Ed2.2 for the new S-One connector. All S-One connectors are manufactured to provide exceptional Cat 5e, Cat 6 and Cat 6<sub>A</sub> performance for shielded and unshielded data networks.

Furthermore Actassi is fully integrated with a wide range of other Schneider Electric solutions and products, such as the Total Office Performance system including products to create a true organic office.

The Actassi system consists of a comprehensive set of products:

- > Connectors for Cat 5e, Cat 6 and Cat 6<sub>A</sub> performance
- > Cross-connect panels
- > Copper and fibre optic LAN cables
- > Patch cords and connecting hardware
- > Cabling and server enclosures



# Building Actassi



**Green Premium** to guarantee our products are compliant with International Environment Regulations & Standards (RoHS, REACH, PEP and EoLI)



Reliable cabling solution & proven technology backed by **extended system warranty**



Superior connectivity with compliance of **international standards (TIA/EIA, ISO/IEC, AS/NZ)**



Apply the latest building management technologies with **proven PoE+ connectivity** to increase efficiency of power usage

Intelligent Management

Pre-term Copper solutions

Enclosures



Superior cable & Connectivity

# Data Center

## Actassi

Schneider electric can provide you a complete solution to create your data center. Please, contact your dealer.



**Future proof** application & above-the-standard performance to maximize the total lifecycle of Actassi solution



**Space optimization** to maximize ROI by utilizing the scared space resources in data center



**Easy deployment** to reduce the construction time needed for new data center



**Real time monitoring** to secure network continuity of physical layer. Minimize downtime that is caused by human error

Intelligent Management



Network racks and cabinets



Future Proof connectivity



High Density Fiber Solution



Superior cable & Connectivity

# Superior usability

By constructing a complete system, we have made sure that there will never be incompatible differences in-between parts. But as an installer, we believe you would like to know the specifics. Let's take a closer look at some less visible Actassi advantages!



## Actassi system

With innovations such as the S-One connector and the sliding 19" patch panels, Actassi allows you to work faster. Installation time will be decreased by up to 20 %, still high-performing network cabling is assured.



## The fast and trouble-free Actassi S-One connector

The One-piece RJ45 connector is tool-less to open and close. Advantages such as the colour coding, smart bridle, U-shaped cable entry and automatic 360° earthing allow you to connect up to 50 % faster. A cutting plier is all the tooling you need. Actassi S-One is designed by Schneider Electric, manufactured in our state-of-the-art factory in Denmark and is fully compliant with the latest standard ISO/IEC 11801: 2011 Ed2.2.



## The pre-equipped 19" panels

The Actassi 19" patch panels with sliding and quick-fix function, automatic earthing, quick-release button and rear cable identification will delight any professional.

Actassi helps you get more jobs done by speeding up each task.

1

# Install seamless end-to-end connectivity

Actassi includes everything needed to install and operate network connections simply and intuitively. Technical innovations and ergonomic features exceeding the demands of end-users and installers, enhance productivity in every workplace.



Actassi is easy to specify, install, use and upgrade. Together with our OptiLine installation system you will have a very flexible network access.



PB501435

## Actassi 19" Enclosures

A complete range of products including all sizes of enclosures, from 6 units to 47 units with different widths, depths and compositions.



P111569

**Quick Fix**  
Our 19" panels are all equipped with the Quick Fix function, allowing simple, firm and convenient installation and maintenance.



P124885

## Actassi 19" Panels

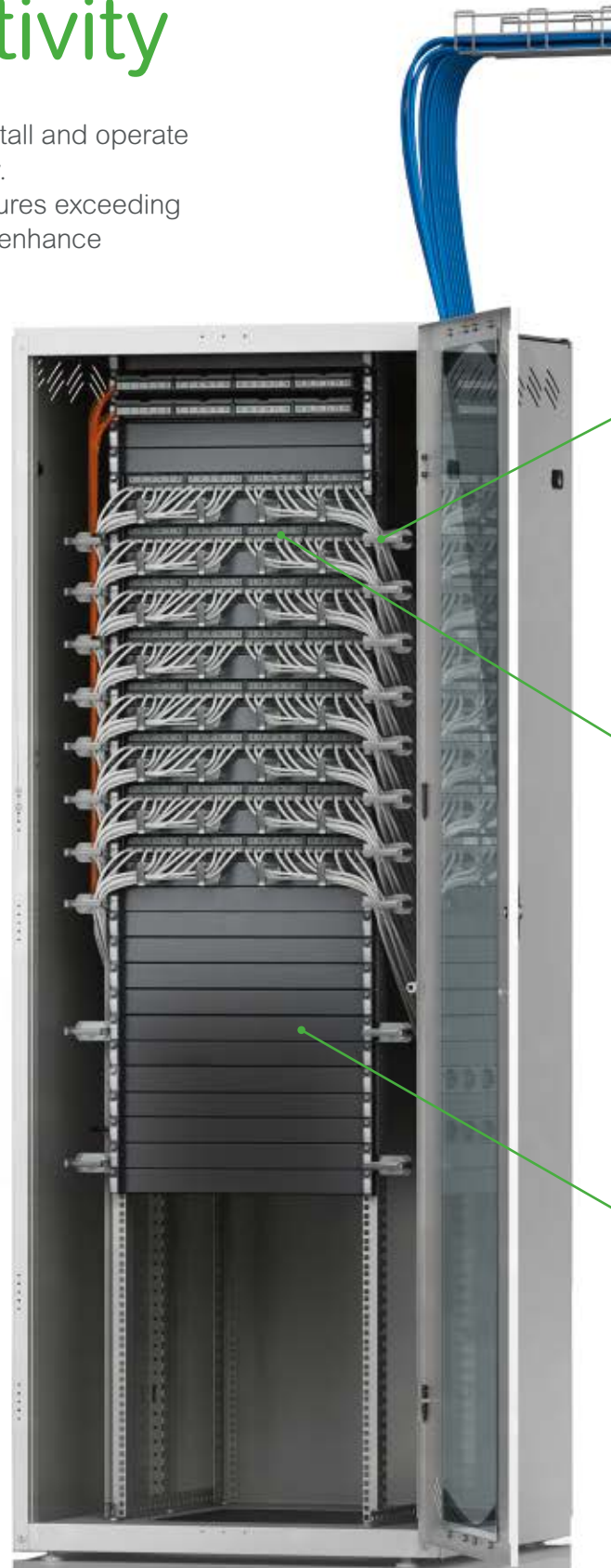
Sliding function, automatic earthing, quick-release button and rear cable identification make the Actassi 19" panel a delight to install.



P121600

## Actassi S-One – Twice as fast

The new Actassi S-One RJ45 connector, with features like the smart bridle, is up to 50 % faster to connect than most other connectors.



147329



OptiLine Consolidation point

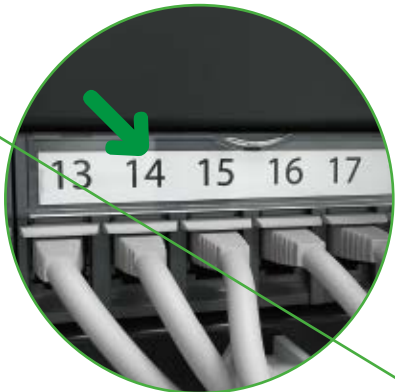
Performa Mesh trays

1



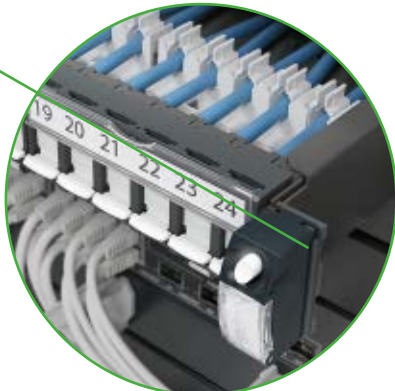
### Cable management for perfectionists

Every cord and cable is easily fixed and fastened in its designated place.



### Clear marking

Both patch panels and connector face plates are equipped with a system for clear marking.



### Expand in no time

The patch panels are pre-equipped and have benefits such as the Quick Fix and a convenient sliding function.

# Complete peace of mind

Did you connect the right wire? Did you remember earthing? With Actassi you never have to worry again. The shielded connectors have an automatic 360° earthing, so you will save time and provide safe installations simultaneously. But security isn't only a built-in feature in products. It's also a philosophy that has governed the way we have designed the Actassi support services and warranties.



We offer comprehensive training programmes as well as extensive warranties.



P126891

## You will get it right, intuitively



Actassi system warranty covers the complete network, from the technical room to the workstation. Ask your local Schneider Electric sales office for detailed information on the warranties and support resources in your country.

Actassi is built on intuitive installation technology, making it very hard to fail. But if there are any uncertainties, don't hesitate to call your local support services. They are happy to answer your questions. And if there is something you would like to excel at, you are always welcome to join our training programmes.

**Certified standard and global accessibility**  
All Actassi products are certified to the highest standards by a third party. Several products actually exceed international standards to give you true top-class performance and reliable connectivity. Our worldwide presence and well-known distribution partners also ensure both global and local access to our products and services.



P130046

P63209

**The Digital Rule helps you select products**  
Do you find it hard to select RJ45 connectors, patch panels, cables and enclosures? Visit [schneider-electric.com](http://schneider-electric.com) and try our Digital Rule. It's an intelligent online e-catalogue which will facilitate your choices and ensure an error-free specification.

# Environment in focus

Energetic and environmental responsibility lies at the core of Schneider Electric culture and strategy. We strive to reduce the environmental impact of our products throughout their entire life-cycle, particularly through eco-design and eco-production.



Actassi is compliant with RoHS, the REACH European directives and PEP Eco passport. Product Environmental Profile available on request.



P127364

## Eco-design

The European Union enacted an Energy using Products (EuP) framework directive in 2005 (directive on the eco-design of products) which seeks to promote eco-design approaches in priority sectors, or even to specify the aims of impacts for some products.

Although Schneider Electric's supply is outside of the EuP target, it generalises the eco-design approach to all its developmental activities and undertakes to communicate the environmental features of its products through Product Environmental Profiles (PEPs).

## Product Environmental Profile

For each product Schneider Electric undertakes to publish a Product Environmental Profile (PEP). It provides customers with information on their environmental performances during their life cycle as well as the best treatment solutions at the end of their life. To ensure transparency and the validity of the data, it complies with ISO 14025 in an inter-professional programme which sets shared calculation and drafting rules for publishing the environmental impacts of products.



P131634

# Actassi 19" patch panels

The Actassi 19" panels are indeed an installer's delight! They are innovative, simple and efficient. They are also part of the global Actassi product portfolio for Network Connectivity including connectors, cables and enclosures. Actassi is also a vital component of TOP – the Total Office Performance system – making workspaces energy efficient, flexible and comfortable. TOP includes everything from power and data distribution, to safety systems and lifespace controls. So, when you choose Actassi you'll get superior usability and a truly seamless end-to-end connectivity.



P147328

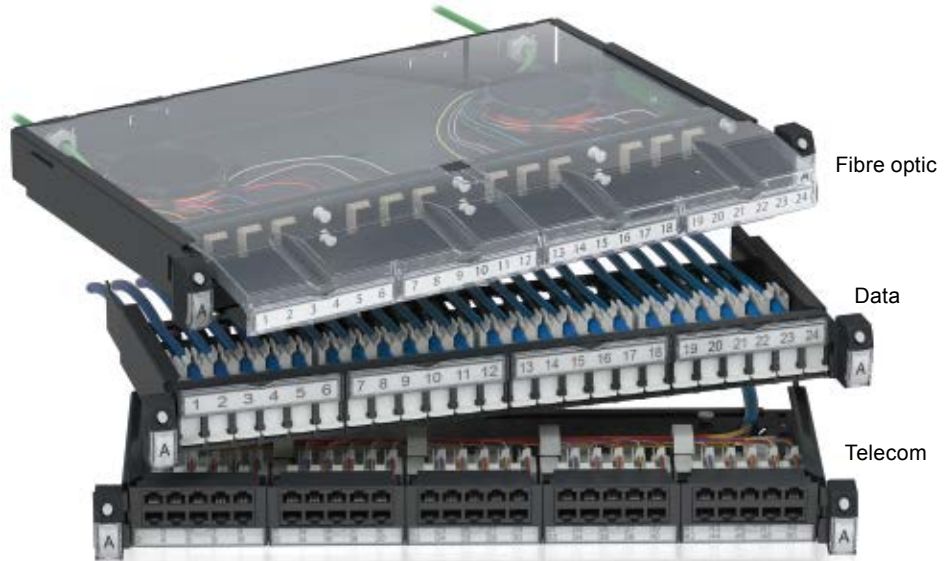
# Making professional IT and network installations easy



P111669

All Actassi panels are equipped with the smart and innovative Quick Fix function.

Now, furnishing or maintaining our 19" racks with panels couldn't be done easier or faster. Actassi panels are all equipped with the Quick Fix function, a mechanism mounted at each side of the 1U panel, which helps them to be quickly opened.



P111437

## A panel for every need

We've got panels for fibre optic, data and telecom. They have all been developed with two words in focus - easy and smart. Some examples; Quick Fix function, sliding panels, clear marking and easy cable management.

The fibre optic panels also have a highly developed protection against dust. And the best of it all, the panels are also available pre-equipped, to make your ordering and installation as simple as possible. Of course power panels are also part of our offer.



P111548

**Quick Fix**  
Just press the button and the panel smoothly slides out. Other Quick Fix secrets are the guiding fingers and the pre-mounted screws. The integrated label holder gives the panel a unique identity.



P110643

**Homogeneous design**  
Actassi is not only a high quality system, it also looks good! The appearance is really professional since we have kept the same aesthetics for the whole range.



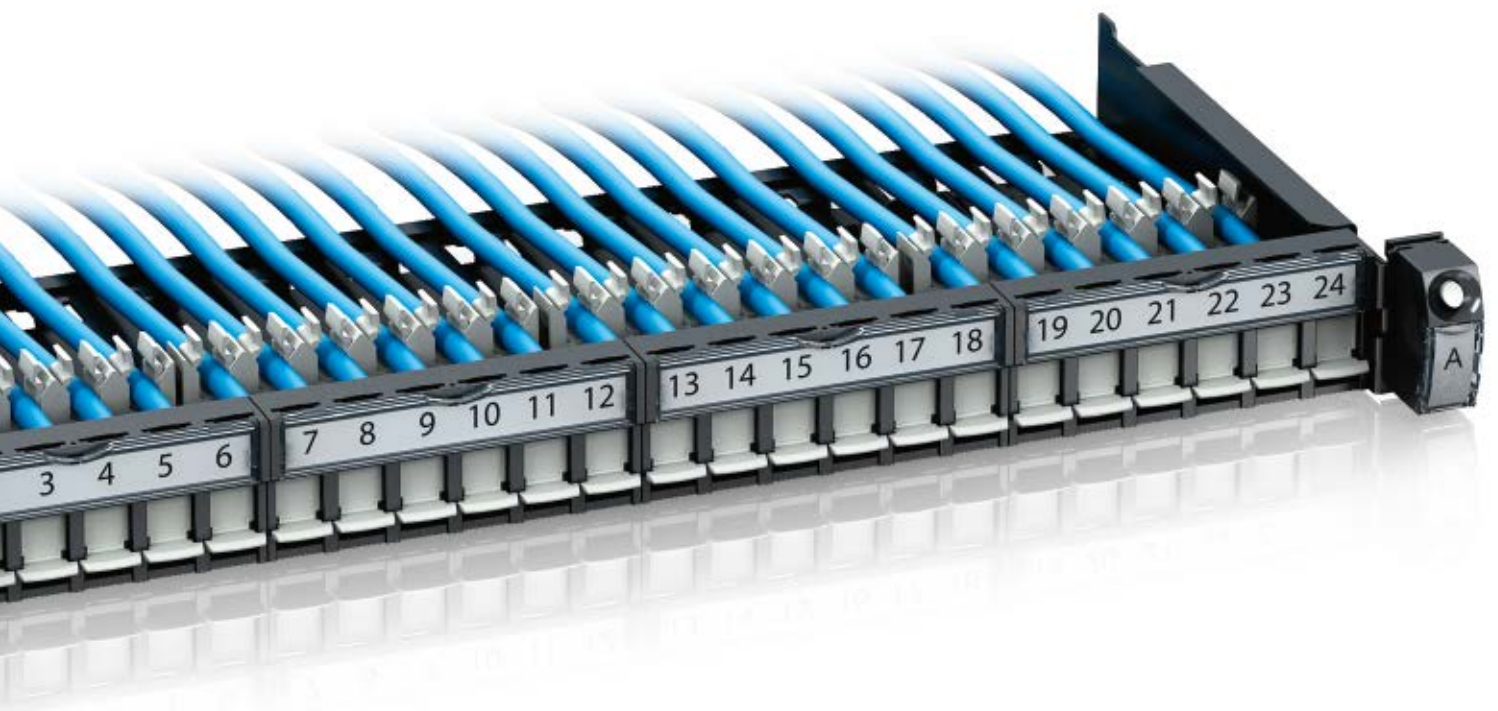
P110642

**Future proof**  
All Actassi products are part of our modular offer for creating a professional IT and network environment. The robust design, construction and high-quality materials are other long-lasting guarantees. That's why the Actassi products are future proof.



P110644

**Good overview**  
The transparent front lids and the top cover protect the patchcords and fibres, and give a clear visibility of the inside.



P111203

# Actassi Copper solution

<b>Connectors .....</b>	<b>20</b>
S-One .....	24
S-110 .....	25
<b>Cables .....</b>	<b>27</b>
CL-C Copper LAN cables - Category 5e .....	30
CL-C Copper LAN cables - Category 6 .....	31
CL-MNC Copper LAN cables Category 6A.....	32
<b>CP-Link and patch cords.....</b>	<b>33</b>
CL-MNC Copper - Category 6.....	33
CL-MNC Copper - Category 6A.....	34
<b>Panels .....</b>	<b>35</b>
S-One .....	36
S-110 .....	37
<b>Cable management and accessories .....</b>	<b>38</b>
S-One, S-One DPM and S-110 .....	39

# Actassi S-One RJ45 connectors



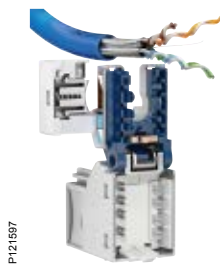
## Actassi S-One with one-piece design for faster and safer installations

Without any loose parts the Actassi S-One connector is more compact, easier to handle and up to 50 % faster to connect. The connector is delivered open, ready to connect. It has an automatic 360° cable earthing, a simple locking termination and a very smart locking function. The robust one-piece design is suitable for all applications, and in the Actassi S-One range you'll find both unshielded and shielded connectors of all categories.



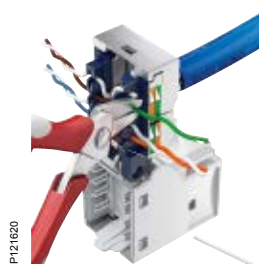
### PoE+

The Actassi S-One connector is now certified and fully compliant with the PoE+ standards by Delta, allowing transport of up to 30 W in the data cable.



### Ready...

S-One is delivered open. Just insert the cable in the central U-shaped entry.



### Steady...

Close the smart bridle – it will automatically lock the cable and provide 360° earthing.



### Done.

Shut the connector. A “click” confirms that it's locked into its firm and reliable position.

# Actassi S-One benefits

## U-shaped cable entry with a smart bridle

Despite being compact in size, the connector has enough space inside for your work. All functions are designed to ease your installation.

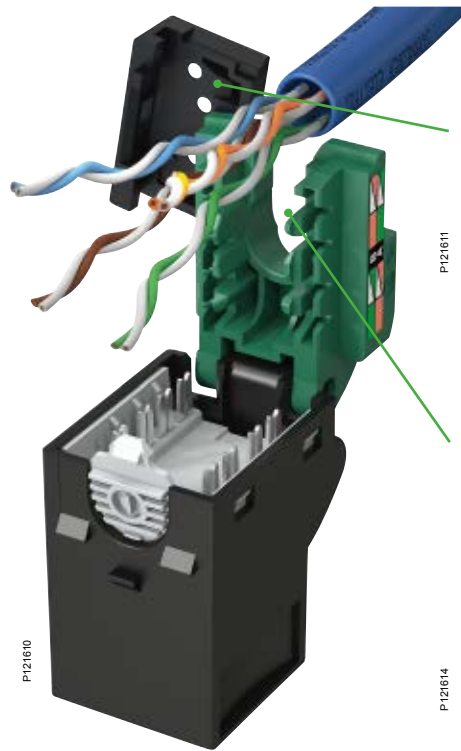
## Safe and automatic 360° earthing

Actassi S-One easily provides automatic earthing without any tools.

## Protected IDC

With Actassi S-One it's nearly impossible to damage cables or fingers, since the IDC is concealed in a cavity.

## Ergonomic design



Smart bridle with elastomer insert for cable locking reduces risk of damaging cables. U-shaped cable entry. Easy access for all cables.



Central cable entry for optimized performance.



Automatic 360° earthing with spring-loaded locking and earthing bridle.



Integrated earth-drain contact provides double earthing.

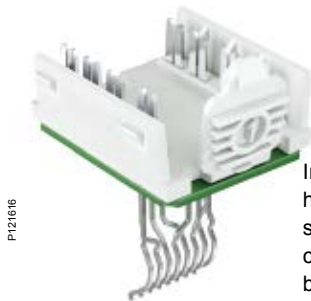
## Re-open in two clicks

You can hear the Actassi S-One opening and closing.

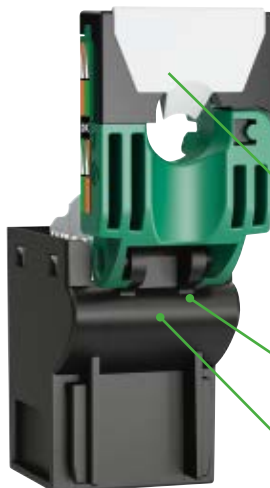
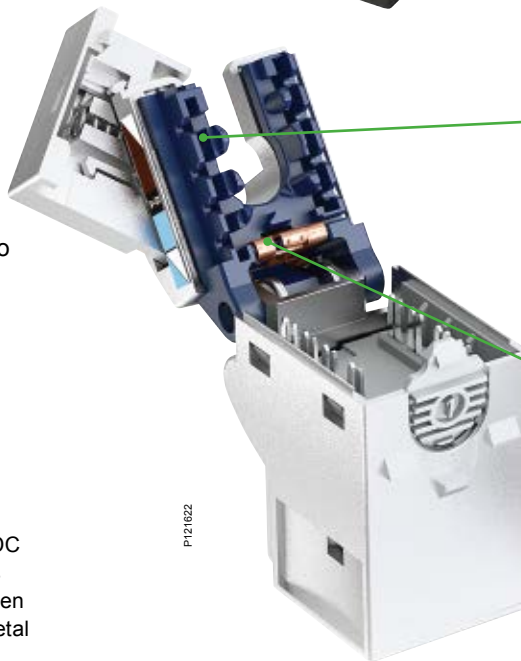
Quick-release buttons for tool-less re-opening.

Reduced risk of damaging connections.

Re-close with a simple click-click.



Insulated plastic IDC housing eliminates short-circuit between conductors and metal body.

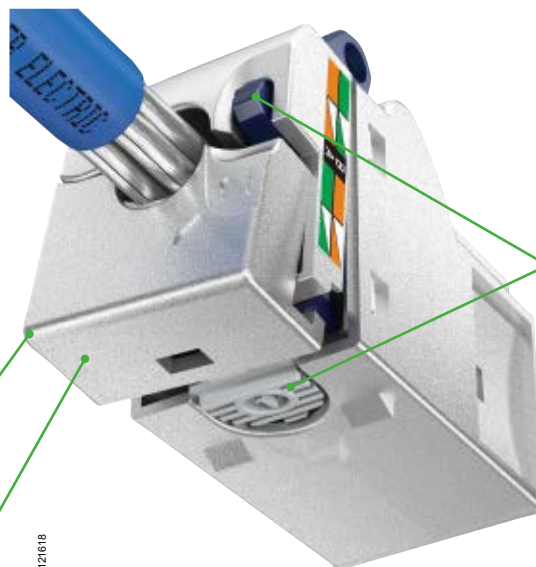


Installing shouldn't be painful! So in the Actassi S-One range it isn't.

Bridle with elastomer insert (unshielded) for convenient locking and soft touch.

Smooth design with rounded edges.

Touch-friendly materials.



# Actassi S-One is colour-coded

The Actassi S-One wire organizers are colour-coded to make performance identification safer and easier. Both unshielded and shielded connectors are coded according to the same system. Green for Cat 5e, light blue for Cat 6 and dark blue for Cat 6A.

## Practical eco-box

- Box of 12 connectors.
- Connectors delivered open, ready to connect.
- Cardboard package for easy recycling.

Integrated hook  
for the 19" rack.



## Unshielded

The unshielded Actassi S-One connectors have a smooth feel. The design promotes safety and comfort by its finely contoured shape, edges and elastomer insert.

## Shielded

The shielded Actassi S-One connectors have two very time saving and safe features. It's the spring-loaded bridle for locking and automatic 360° earthing, and the integrated earth drain contact, which provides efficient double earthing.



## Full compliance with ISO/IEC 11801: 2011 Ed2.2

To get your complete network installation classified you need to work with classified components. That's why you should choose our solutions. We provide seamless end-to-end connectivity through safe, speedy and reliable network installations.

We are constantly adjusting and updating our portfolio, and at the same time making sure that they are fully compatible with older and future solutions.

Cat 5e

Cat 6

Cat 6<sub>A</sub>



2



Every part in our Actassi range is certified to deliver what we claim they will. The Actassi S-One components are produced in Europe and fully compliant with ISO/IEC 11801: 2011 Ed2.2 for Cat 6<sub>A</sub>, so you can always count on an outstanding performance and reliability.

- Performance categories: Cat 5e, 6 and 6<sub>A</sub>, unshielded and shielded
- Material: unshielded in ABS plastic, shielded in zamak
- Size: height 1.1 in (28 mm), width 0.7 in (18 mm), depth 1.37 in (35 mm)
- Applicable standards:
  - ISO/IEC 11801: 2011 Ed2.2, class EA permanent link and channel
  - IEC 60603-7-51 Cat 6<sub>A</sub> connecting hardware
  - ANSI/TIA-568-C.2 Cat 6<sub>A</sub> connecting hardware
- One-piece design and U-shaped cable entry
- Tool-less IDC termination
- Earthing (shielded): metallic, 360° self-adjusting, plus drain wire contact
- Operational temperature range: -40°F to +158°F (-40°C to +70°C).

### S-One C6<sub>A</sub> – Cat 6<sub>A</sub>

Description	Qty/pack	Ref. No
RJ45 Connector Cat 6 <sub>A</sub> unshielded	12	<b>VDIB1772XU12</b>
RJ45 Connector Cat 6 <sub>A</sub> shielded	12	<b>VDIB1772XB12</b>

P121213



P121216



# Connectors

## S-110

### Category 5e and 6

- Performance category: Cat 5e, unshielded
- Material: ABS plastic
- Size: height 22 mm, width 16 mm, length 36 mm
- Applicable standards: ISO/IEC 11801:2011 Ed2.2, ANSI/TIA-568-C.2
- Keystone footprint
- Punch-down IDC termination
- Operational temperature range: -14°F to +140°F (-10°C to +60°C)
- Individual bags with cabling instructions.

#### S-110 C5e – Cat 5e

Description	Qty/pack	Ref. No
<b>Without shutters</b>		
Connector RJ45 keystone unshielded, black	1	ACTRJSM5ENSUBK



P147510

- Performance category: Cat 6, unshielded
- Component certified by 3<sup>rd</sup> party laboratory
- Material: ABS plastic
- Size: height 22 mm, width 16 mm, length 36 mm
- Applicable standards: ISO/IEC 11801: 2011 Ed2.2, ANSI/TIA-568-C.2
- UL listed
- Keystone footprint
- Punch-down IDC termination tool
- Patented shutter
- Available in various colours
- Operational temperature range: -14°F to +140°F (-10°C to +60°C)
- Individual bag with cabling instructions
- Actassi S-110 Quick termination punch down tools compatible, see page 26.

#### S-110 C6 – Cat 6

Description	Colour	Qty/pack	Ref. No
<b>Without shutters</b>			
Connector RJ45, keystone unshielded	Black	1	VDIB17766UBK
	White	1	VDIB17766UWE



P134688

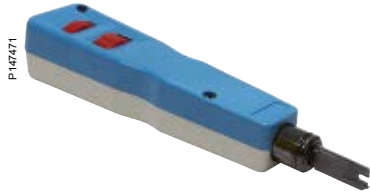


P134688



#### Punch Down Tool

- Exceptional material properties & design
- Suitable for 22-26 AWG wires
- Adjustable impact pressure, between low and high
- It comes with both 110 and Krone type of blades
- Sure lock blade holder
- The tool bit (hardened steel) can punch as well as trim the conductor
- Material: high impact ABS
- RoHS Compliant.



Punch Down Tool

Description	Qty/pack	Ref. No
Punch Down Tool	1	<b>DXYTOOLPUNCH</b>

# Actassi copper cables

## Three ranges that cover all needs



P119856

### CL-C offer

Standard copper LAN cables for your day-to-day installations, based on U/UTP and F/UTP cables, from category 5 to category 6<sub>A</sub>.

The CL-C cables are reliable and well-known, with good performance.



P119855

### CL-MNC offer

High-end copper LAN cables for performances from category 6 to category 7<sub>A</sub> 1000 MHz. Exceeding international standards by 3 dB minimum on NEXT. Full Delta certification for components.

2

## Actassi offer overview

Type of shielding	Performances				
	Cat 5	Cat 5e	Cat 6	Cat 6 <sub>A</sub>	Cat 7 <sub>A</sub>
U/UTP		CL-C*	CL-C* CL-MNC		
F/UTP	CL-C*	CL-C*	CL-C	CL-C CL-MNC	
SF/UTP			CL-C		
U/FTP			CL-MNC	CL-MNC	
F/FTP				CL-MNC	CL-MNC
S/FTP					CL-MNC**

\* Available with PVC or LSZH jacket material.

\*\* Available with LSZH or LSRZH (LSZH + improved Fire Resistance) sheath material.

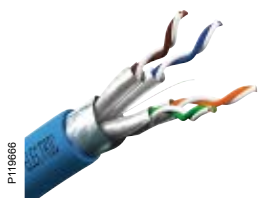
## Cable standardisation

X/X TP

- TP= Twisted Pair
- F= Foil screened, U=Unscreened
- F=Foil screened, S=Braid screened, SF=Braid & Foil screened, U=Unscreened

# Actassi copper cables

## Some important advantages



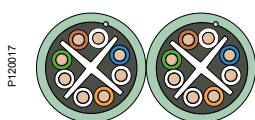
### CL-C, CL-MNC, CL-MX conductivity

For the whole offer, the conducting side of the shield is turned outwards. Thus, there is no need to turn the shield inside out before applying the connector to have a good conductivity. You will gain time during installation, there will be no destruction of the shield and you will get very good shielding.



### CL-MNC crossfiller with optimized design and micro-blades

With an optimized design and specific micro-blades, you will have better performances in NEXT and ELFEXT, and a better resistance to the mechanical constraints.



### CL-C, CL-MNC, CL-MX dual cables

In order to facilitate cable laying, the majority of our cables are available in dual version. Only one operation to install two cables.

### Certificates

All LAN cables from Category 6 are certified at a component level by the independent third-party laboratory Delta. Certificates are regularly updated to be compliant to the latest and highest international standards.



# Performances

Frequency (MHz)	250		500			1000
Attenuation (dB)*	32.8	33	45.3	45.3	45.3	61.9
NEXT (dB)*	38.3	42.3	33.8	33.8	54.8	60.4
ACR-F (dB)*	19.8	23	13.8	13.8	24	35.3
Propagation speed (%c)	68	68	70	70	82	78



\* Guaranteed characteristics given for 328.08 ft (100 meters) at maximum frequencies: 250 MHz for category 6, 500 MHz for category 6<sub>A</sub>, 1000 MHz for category 7<sub>A</sub>.

# Cables

## CL-C Copper LAN cables - Category 5e

### Category 5e cables

The Actassi Category 5e 4-pair cable consists of 24 AWG solid-copper conductors insulated with high-density polyethylene. The insulated conductors are tightly twisted into pairs and covered with PVC material.

The cable provides excellent high-speed transmission, is certified to 100 MHz. This product is UL listed with a CMR or CMP fire rating.

### Product features

- Compliant with enhanced Category 5 standard.

### CL-C Cat 5e U/UTP

#### Specifications

- 24 AWG. 4 pairs.

#### Performances

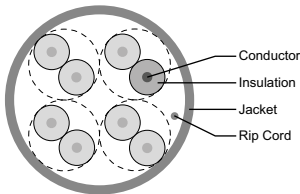
- Complies with TIA/EIA-568-C.2 Category 5e and ISO/IEC 11801 Class D standards.

2D4P5U/UTP\_Cat5e\_UTP\_PVC\_green



ACT4P5EUCP1ARXGR

Cat5e UTP Cable\_dwg



NEXT	Guaranteed	Standard IEC
100 MHz	37.3 dB	≥ 35.3 dB

#### Use

- Applications such as 155 Mb/s ATM, 622 Mb/s ATM and IEEE 802.3 1000 Base-T (Gigabit ethernet) standards, using parallel transmission technology.

Type	Weight	Diameter	Sheath	Cond/Length	Ref. No
4 pair cable	0.020 lb/ft (30 kg/km)	0.20 in (5.3 mm)	PVC - CMR	1000 ft (305 m)	<b>ACT4P5EUCR1ARXGR</b>
		0.189 in (4.8 mm)	CMP	1000 ft (305 m)	<b>ACT4P5EUCP1ARXGR</b>

### Category 6 cables

The Category 6 cable consists of 4 pairs of solid insulated copper 23 AWG and is UL listed with a CMR or CMP fire rating. The cable provides a significant margin above the minimum Category 6 near end crosstalk NEXT requirement of ANSI/TIA/EIA-568 and ISO/IEC 11801.

### CL-C Cat 6 U/UTP - CMR

#### Specifications

- 23 AWG. 4 pairs. Centre filler to maintain pair twisting and optimum NEXT and RL performance.

#### Performances

- Complies with TIA/EIA-568-C.2 Category 6 and ISO/IEC 11801 Class E standards.

NEXT	Guaranteed	Standard IEC
250 MHz	40.3 dB	≥ 39.3 dB

#### Use

- In horizontal cabling situations.
- High-bandwidth applications, including the IEEE 802.3AB 1000 Base-T (Gigabit ethernet), TIA/EIA 1000 Base-TX, 1.2 Gb/s ATM and any future applications designed for Category 6/Class E cabling, broadband video.

Type	Weight	Diameter	Sheath	Cond/Length	Ref. No
4 pair cable	0.028 lb/ft (43 kg/km)	0.236 in (6 mm)	PVC - CMR	1000 ft (305 m)	<b>ACT4P6UCR1ARXGR</b>

### CL-C Cat 6 U/UTP - CMP

#### Specifications

- 23 AWG. 4 twisted pairs. Optimised twisted pair cable makes better NEXT and RL performance.

#### Performances

- Complies with TIA/EIA-568-C.2 Category 6 and ISO/IEC 11801 Class E standards.

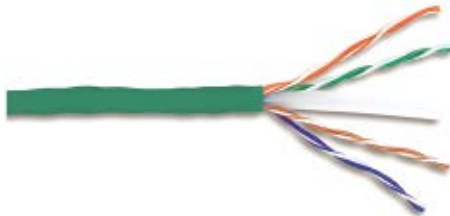
NEXT	Guaranteed	Standard IEC
250 MHz	40.3 dB	≥ 38.3 dB

#### Use

- In horizontal cabling situations.
- High-bandwidth applications, including the IEEE 802.3AB 1000 Base-T (Gigabit ethernet), TIA/EIA 1000 Base-TX, 1.2 Gb/s ATM and any future applications designed for Category 6/Class E cabling, broadband video.

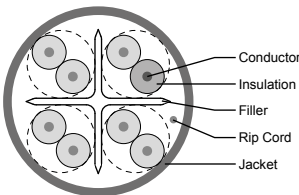
Type	Weight	Diameter	Sheath	Cond/Length	Ref. No
4 pair cable	0.023 lb/ft (35 kg/km)	0.198 in (5 mm)	CMP	1000 ft (305 m)	<b>ACT4P6UCP1ARXGR</b>

2D4P6IPV3B\_Cat6\_UTP\_green



ACT4P6UCR1ARXGR

Cat6 UTP Cable

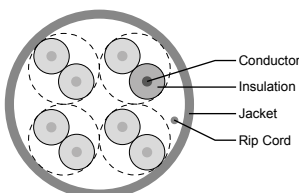


Cat6\_UTP\_CMP\_green



ACT4P6UCP1ARXGR

Cat6 UTP Cable2



# Cables

## CL-MNC Copper LAN cables Category 6A

The Cat 6<sub>A</sub> cable consists of 4 pairs of solid insulated copper 23 AWG. The cable provides a significant margin above the Category 6<sub>A</sub> Alien Crosstalk (ANEXT) requirement of TIA/EIA 568-C.2 Category 6<sub>A</sub> and ISO/IEC 11801 Class Ea.

### CL-MNC Cat 6<sub>A</sub> U/UTP

#### Specifications

- 23 AWG. 4 pairs. Centre filler to maintain pair twisting.

#### Performances

- Complies with TIA/EIA-568-C.2 Category 6<sub>A</sub> and ISO/IEC 11801 Class Ea standards.

NEXT	Guaranteed	Standard IEC
500 MHz	35.8 dB	≥ 33.8 dB

#### Use

- In horizontal cabling situations
- Support 10G Base-T, 1000 Base-T and 1000 Base-TX LANs and broadband video applications.

Type	Weight	Diameter	Sheath	Cond/Length	Ref. No
4 pair cable	0.053 lb/ft (79 kg/km)	0.325 in (8.1 mm)	PVC - CMR	1000 ft (305 m)	<b>ACTTG4P6AUCR1ARGR</b>
		0.33 in (8.4 mm)	CMP	1000 ft (305 m)	<b>ACTTG4P6AUCP1ARGR</b>

### CL-MNC Cat 6<sub>A</sub> F/UTP

#### Specifications

- 23 AWG. 4 pairs. Centre filler to maintain pair twisting.

#### Performances

- Complies with TIA/EIA-568-C.2 Category 6<sub>A</sub> and ISO/IEC 11801 Class Ea standards.

NEXT	Guaranteed	Standard IEC
500 MHz	35.8 dB	≥ 33.8 dB

#### Use

- In horizontal cabling situations
- Support 10G Base-T, 1000 Base-T and 1000 Base-TX LANs and broadband video applications.

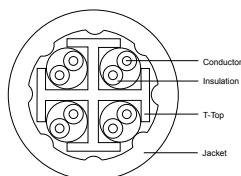
Type	Weight	Diameter	Sheath	Cond/Length	Ref. No
4 pair cable	0.053 lb/ft (79 kg/km)	0.295 in (7.5 mm)	PVC - CMR	1000 ft (305 m)	<b>ACTTG4P6ASCR1ARGR</b>
			CMP	1000 ft (305 m)	<b>ACTTG4P6ASCP1ARGR</b>

P7180170\_green



ACTTG4P6AUCP1ARGR

ACTTG4P6AUCP1ARGR

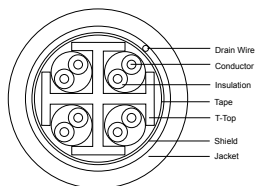


ACTTG4P6ASCP1ARGR\_green



ACTTG4P6ASCP1ARGR

ACTTG4P6ASCP1ARGR



Cat6\_UTP\_PatchCord



ACTPC6UBCMxxABU

Cat6\_UTP\_PatchCord\_red



ACTPC6UBCMxxARD

### CL-MNC Patch cord U/UTP Cat 6

#### Specifications

- 300 MHz, outer sheath CM - PVC
- Wiring sequence: T568B
- 100 % performance tested and wired T568B

Type	Colour of sheath	Length	Ref. No
4 pairs	Blue	1 ft	ACTPC6UBCM01ABU
		3 ft	ACTPC6UBCM03ABU
		6 ft	ACTPC6UBCM06ABU
		9 ft	ACTPC6UBCM09ABU
		15 ft	ACTPC6UBCM15ABU
	Red	1 ft	ACTPC6UBCM01ARD
		3 ft	ACTPC6UBCM03ARD
		6 ft	ACTPC6UBCM06ARD
		9 ft	ACTPC6UBCM09ARD
		15 ft	ACTPC6UBCM15ARD



# CP-Link and patch cords

## CL-MNC Copper - Category 6A

### CL-MNC Patch cord F/UTP Cat 6<sub>A</sub>

**Specifications**

- 500 MHz, outer sheath CM - PVC
- Wiring sequence: T568B
- 100 % performance tested and wired T568B

P147326



ACTPTG6ASBCMxxABU

P147327



ACTPTG6ASBCMxxARD

Type	Colour of sheath	Length	Ref. No
4 pairs	Blue	1 ft	ACTPTG6ASBCM01ABU
		3 ft	ACTPTG6ASBCM03ABU
		6 ft	ACTPTG6ASBCM06ABU
		9 ft	ACTPTG6ASBCM09ABU
		15 ft	ACTPTG6ASBCM15ABU
	Red	1 ft	ACTPTG6ASBCM01ARD
3 ft		ACTPTG6ASBCM03ARD	
6 ft		ACTPTG6ASBCM06ARD	
9 ft		ACTPTG6ASBCM09ARD	
15 ft		ACTPTG6ASBCM15ARD	

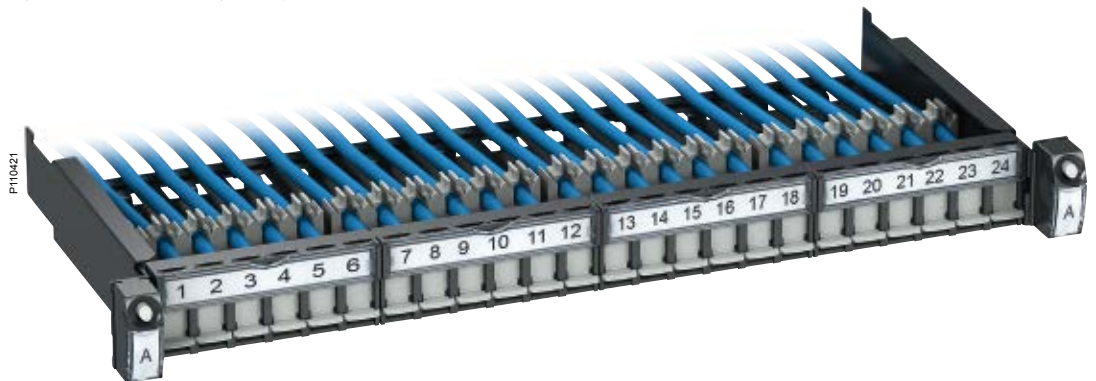
# Panel range with S-One, and S-110

## Actassi data panels

The data panels contain a front configuration for 24 RJ45 connectors. All panels have the smart Quick Fix function. They are also available pre-equipped with connectors, shutters, label holders and a rear cable organizer. We try to make your life as easy as possible.

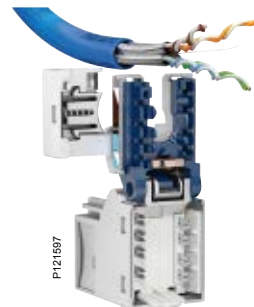


The data panel is available pre-equipped with the innovative S-One connectors.



### Sliding helps installation

Maintenance and extensions are smoothly performed with the help of the Quick Fix sliding function.



### Actassi S-One

The connectors are a one-piece design for very fast and reliable wiring. Actassi S-One exceeds component hardware certification for standards like ISO/IEC 11801: 2011 Ed2.2 for Cat 6A, ensuring optimized network performance.



**Cable management**  
Apart from the systems with colour codes, labels and numbers, the technical setup at the rear of the panel is designed to enhance order. Cables of various diameters are easily mounted and kept in place in specified slots.



**Rear position numbers**  
Keeping track of each RJ45 could sometimes be very hard. Actassi is changing all of that! The cable numbers at the rear correspond to those at the front, simplifying installation and maintenance from both sides of the rack.



**Automatic earthing**  
An automatic earthing for FTP/STP versions is integrated in the panel.



**Clear front marking**  
Each panel plate has an openable label holder. Print your own labels or use the included versions with pre-printed port numbers. Each shutter can also be colour coded for quick identification in both open and closed positions.

### Empty sliding panel for S-One connectors 1U 24 ports

- Empty sliding 19" copper panel (without connectors)
- 1U height
- 24 RJ45 ports
- 1 Quick Fix function on both sides to allow a simple, quick fixing position and sliding feature
- Available in two versions:
  - evolution: panels equipped with 24 shutters in light grey, 4 label holders, and one cable manager at the rear
  - basic: panels without shutters, label holders, cable manager
- Metal sheet: thickness 0.047 in (1.2 mm). Dark grey RAL 7016
- Plastic parts in PA66 GF20 or PA6
- Simple clicking connectors for mounting
- Automatic earthing with the pre-equipped bus bar for FTP/STP versions.

**Evolution version: pre-equipped with 24 light grey shutters, 4 label holders, 1 rear cable organizer**

Description	Ref. No
Empty panel 1U UTP 24 ports	<b>VDIG112241U</b>
Empty panel 1U FTP/STP 24 ports	<b>VDIG112241F</b>

P11249



# Panels

## S-110

### Equipped fixed panel with S-110 connectors, Cat 5e and Cat 6 UTP, 1U 24 ports,

- Equipped fixed 19" copper panel (with connectors, pre-mounted)
- 1U height
- 24 RJ45 ports
- 1 Quick Fix function on both sides to allow a simple, quick fixing position
- Panels equipped with 4 label holders and a metal tray cable manager
- Metal sheet: thickness 0.047 in (1.2 mm). Dark grey RAL 7016
- Plastic parts in PA66 GF20 or PA6
- Simple clicking connectors for mounting and dismounting.

**Evolution version: pre-equipped with 24 RJ45 S-110 keystone connectors (pre-mounted) and a metal tray cable manager**



Description	Ref. No
<b>Category 5e</b> Equipped panel 1U with 24 RJ45 S-110 connectors keystone Cat 5e UTP	<b>VDIG113241U50</b>
<b>Category 6</b> Equipped panel 1U with 24 RJ45 S-110 connectors keystone Cat 6 UTP	<b>VDIG113241U60</b>



# Accessories and guiding panels

The Actassi system also includes a range of panels and smart accessories for improved cable management. The innovative patchcords guiding panel is equipped with four openable rings, managing up to 48 cords.



**Brush and blank panel**  
Brush guiding panel. Blank panel instead of an empty gap in the rack.



**Guiding panels for patch cords**  
The 1U panel manages 24 cords, and 2U panel 48 cords. Easily opened but still safe, since a clever device prevents cords from falling out. Also possible to pull out only one cord if needed.



P110464



**Side rings for rack 31.5 x 31.5 in (800 x 800 mm)**  
Rings for vertical management of up to 48 patch cords, attached to each side of the guiding panel (or any panel with Quick Fix). Available for 1U and 2U.



P110464



**Vertical rings for rack 23.6 x 23.6 in (600 x 600 mm)**  
For the 23.6 x 23.6 in racks, use the smaller tie up devices to keep your installations in neat order.



P110615

# Cable management and accessories

## S-One, S-One DPM and S-110



### Patch cord guiding panels

- Patch cord guiding panel
- 1U, 2U
- 1 Quick Fix function on both sides to allow a simple, quick fixing position
- 4 openable rings
- Patch cord holder integrated inside the ring for opened position.

Description	Ref. No
Patch cord guiding panel 1U with 4 openable rings	<b>VDIG188141</b>
Patch cord guiding panel 2U with 4 openable rings	<b>VDIG188142</b>



### Brush guiding panel

- Patch cord guiding panel
- 1U
- 1 Quick Fix function on both sides to allow a simple, quick fixing position.

Description	Ref. No
Patch cord brush guiding panel 1U	<b>VDIG188201</b>



### Side rings for vertical management

- Rings for vertical management of patch cords, in horizontal and vertical position
- Openable
- For racks 31.5 x 31.5 in (800 x 800 mm) and 23.6 x 23.6 in (600 x 600 mm)
- Can be fixed on each side of any Quick Fix system panel or guiding panel
- Large capacity up to 48 cords.

Description	Ref. No
Horizontal ring for vertical management of patch cords, 1U, for rack 31.5 x 31.5 in (800 x 800 mm)	<b>VDIM189112</b>
Vertical ring for vertical management of patch cords, 2U, for rack 31.5 x 31.5 in (800 x 800 mm)	<b>VDIM189412</b>
Ring for vertical management of patch cords, using self-grip strip, for rack 23.6 x 23.6 in (600 x 600 mm)	<b>VDIM189111</b>



### Rack shield kit

Description	Ref. No
Rack shield kit, pack of 10 pcs	<b>VDIM48E011</b>





## A

ACT4P5EUCP1ARXGR .....	30
ACT4P5EUCR1ARXGR .....	30
ACT4P6UCP1ARXGR .....	31
ACT4P6UCR1ARXGR .....	31
ACTPC6UBCM01ABU .....	33
ACTPC6UBCM01ARD .....	33
ACTPC6UBCM03ABU .....	33
ACTPC6UBCM03ARD .....	33
ACTPC6UBCM06ABU .....	33
ACTPC6UBCM06ARD .....	33
ACTPC6UBCM09ABU .....	33
ACTPC6UBCM09ARD .....	33
ACTPC6UBCM015ABU .....	33
ACTPC6UBCM015ARD .....	33
ACTPTG6ASBCM01ABU .....	34
ACTPTG6ASBCM01ARD .....	34
ACTPTG6ASBCM03ABU .....	34
ACTPTG6ASBCM03ARD .....	34
ACTPTG6ASBCM06ABU .....	34
ACTPTG6ASBCM06ARD .....	34
ACTPTG6ASBCM09ABU .....	34
ACTPTG6ASBCM09ARD .....	34
ACTPTG6ASBCM15ABU .....	34
ACTPTG6ASBCM15ARD .....	34
ACTRJSM5ENSUBK .....	25
ACTTG4P6ASCP1ARGR .....	32
ACTTG4P6ASCR1ARGR .....	32
ACTTG4P6AUCP1ARGR .....	32
ACTTG4P6AU CR1ARGR .....	32

## D

DXYTOOLPUNCH .....	26
--------------------	----

## V

VDIB1772XB12 .....	24
VDIB1772XU12 .....	24
VDIB1776UBK .....	25
VDIB1776UWE .....	25
VDIG112241F .....	36
VDIG112241U .....	36
VDIG113241U50 .....	37
VDIG113241U60 .....	37
VDIG188141 .....	39
VDIG188142 .....	39
VDIG188201 .....	39
VDIM48E011 .....	39
VDIM189111 .....	39
VDIM189112 .....	39
VDIM189412 .....	39





Life Is On | **Schneider**  
Electric

01-2018  
LSB03160EN

© 2018 - Schneider Electric. All Rights Reserved.  
All trademarks are owned by Schneider Electric Industries SAS or its affiliated companies.

This document has been  
printed on recycled paper

